

OSX Network Information

How To Access Your Private Space:

Click on the **Go** menu in the Finder and choose **Connect to Server**. (Fig. 1)

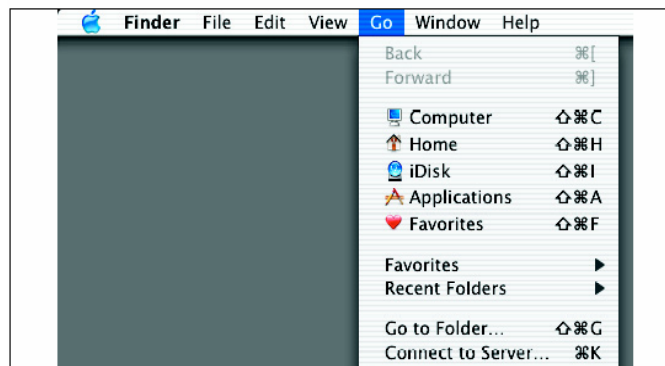


Fig. 1

Next, click on **smb://netfiles.edu.ecuad.ca/TYPE_YOUR_LOGIN_HERE** from the **Favourite Servers** list in the **Connect to Server** window.

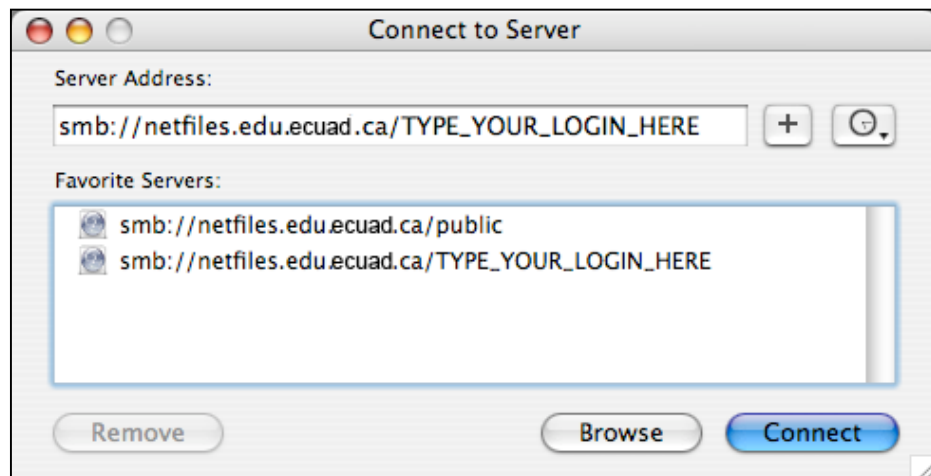


Fig. 2

This is the shortcut to your private space on ECU's servers.

Before you click connect, replace the text in the **Server Address:** field that says "TYPE_YOUR_LOGIN_HERE" **with your own username**.

Usually your username is your first initial and your last name: ie. "jsmith" for John Smith.

Click **Connect**.

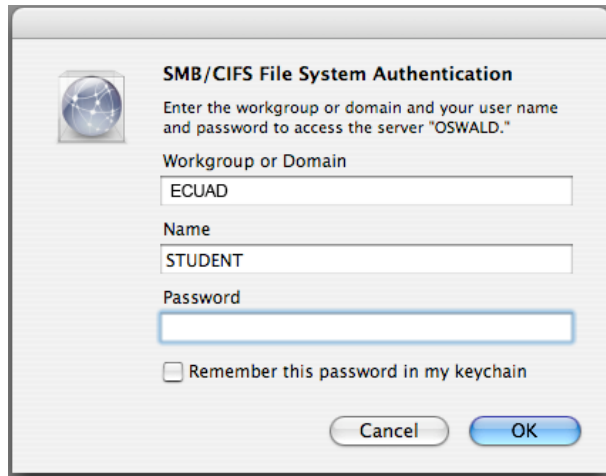


Fig 3

In the window that appears **replace** “STUDENT” in the **Name** field with **your own username**.

Type your password in the password field.

Click **OK** (Fig. 3)

If you have never changed your password it is likely your birth date in this format: **YYMMDD**.



Fig. 4

Once connected, your server space should mount on the desktop underneath the **Hard Drive** icon.

This icon will have the name same as your login name.

Note in the Fig. 4 example the username is “Tech”.

How To Access Public:

Click on the **Go** menu in the Finder and choose **Connect to Server**. (Fig. 1)

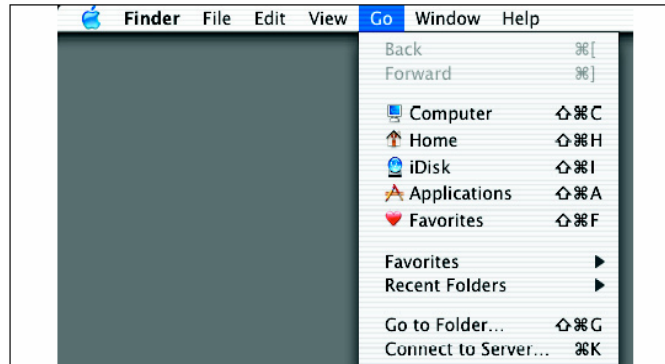


Fig. 1

Next, click on **smb://netfiles.edu.ecuad.ca/public** from the **Favourite Servers** list in the **Connect to Server** window.

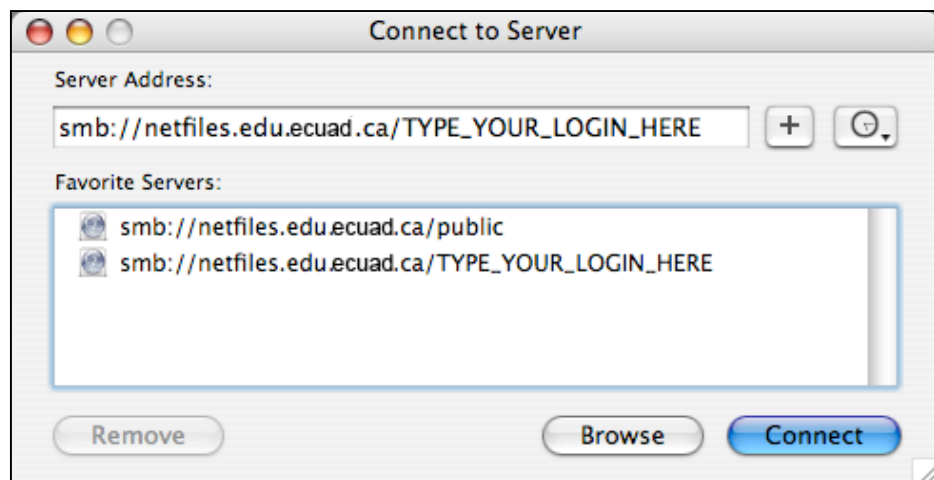
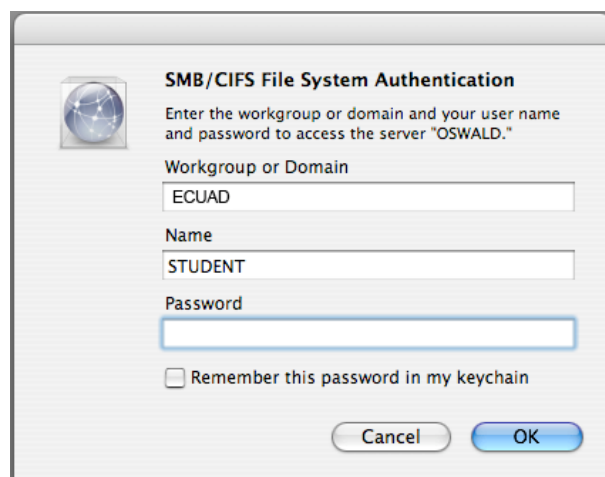


Fig. 2

Click **Connect**.



In the window that appears **replace "STUDENT" in the Name field with your own username.**

Type your password in the password field.

Click **OK**.

If you have never changed your password it is likely your birth date in this format: **YYMMDD**.

Access to Dropboxes in OSX

How To Access Instructors' Dropboxes:

Open the FTP software called "Fetch". It is located in the **Applications** folder.

In the windows that appears, **click on the heart icon** on the top right hand side of the window.

Select "Instructor Dropboxes" from the drop down menu.
See Fig 1.

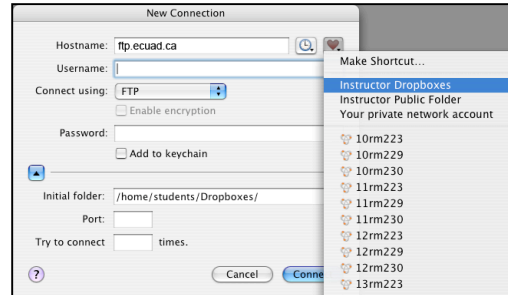


Fig 1

Enter your login in the "Username" field.

Enter your password in the "Password" field.

Click Connect.

See Fig. 2

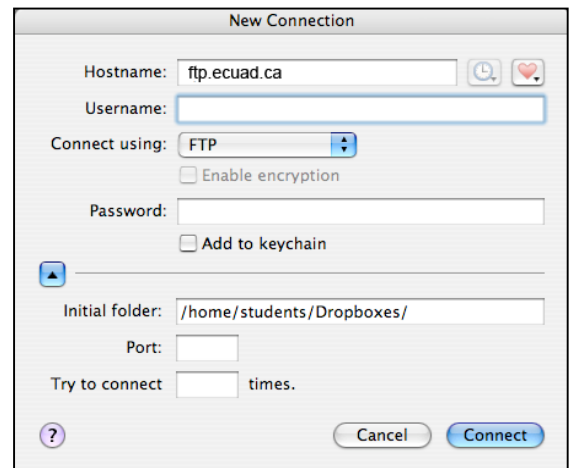


Fig 2

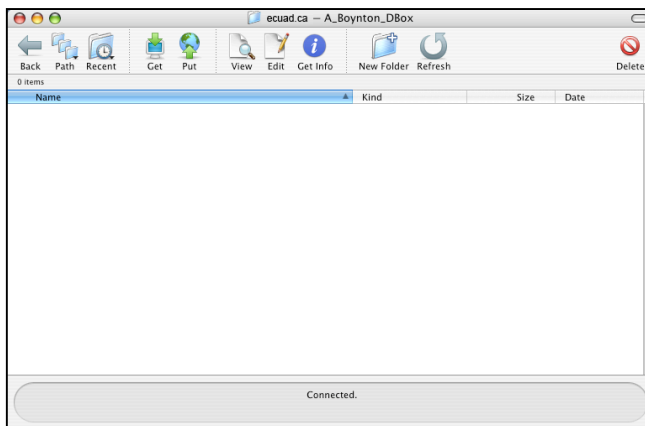


Fig 3

Locate your instructor's Dropbox in the list. **Double click** to open.

Drag and Drop the files/folders into the white area of the open window. **See Fig 3.**

Once the files are uploaded **you will not be able to see anything inside the Dropbox** except the items just uploaded. This is normal.